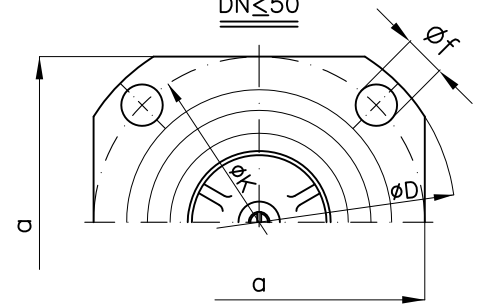


| DN | D1 | d | H (~) | a | D | K | f | Holes NO. f | Weight (Kg) |
|-----|-----|-----|----------|----|-----|-----|----|-------------------|----------------|
| 40 | 152 | 40 | 105 | 85 | 110 | 85 | 14 | 4 | |
| 50 | 171 | 50 | 120 | 95 | 120 | 95 | 14 | 4 | |
| 60 | 191 | 60 | 130 | - | 135 | 110 | 14 | 6 | |
| 70 | 203 | 70 | 135 | - | 140 | 115 | 14 | 6 | |
| 80 | 229 | 80 | 155 | - | 155 | 130 | 14 | 8 | |
| 100 | 254 | 100 | 175 | - | 175 | 150 | 14 | 8 | |
| 125 | 305 | 125 | 200 | - | 200 | 175 | 14 | 12 | |
| 150 | 343 | 150 | 220 | - | 230 | 205 | 14 | 12 | |

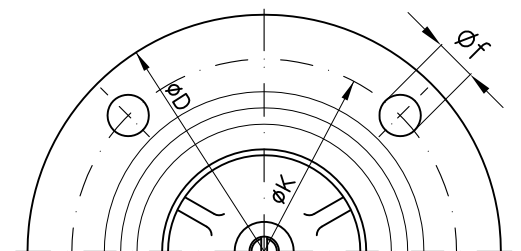
Flangia quadra
Square flange

DN ≤ 50



Flangia tonda
Round flange

DN ≥ 60



| Combinazione materiali standard – Standard materials Combination | | | |
|--|-------------------------------|--|--|
| ITEM | DENOMINAZIONE DENOMINATION | B/316 MATERIALE MATERIAL | N/316 MATERIALE MATERIAL |
| 01 | Body | Bronze UNI EN1982 G-CuSn5Zn5Pb5 | Bronze UNI EN1982 G-CuSn10Zn2Ni2 |
| 02 | Bonnet | Bronze UNI EN1982 G-CuSn5Zn5Pb5 | Bronze UNI EN1982 G-CuSn10Zn2Ni2 |
| 03 | Basket | Stainless steel AISI316 UNI EN10088 | Stainless steel AISI316 UNI EN10088 |
| 04 | Disc | Bronze UNI EN1982 G-CuSn5Zn5Pb5 | Bronze UNI EN1982 G-CuSn10Zn2Ni2 |
| 05 | Gasket | EPDM | EPDM |
| 06 | Bonnet stud bolt | Stainless Steel AISI304 (A2) | Stainless Steel AISI316 (A4) |
| 07 | Nut | Brass CW617N (OT58) | Stainless Steel AISI316 (A4) |

Nota: Combinazioni materiali non standard a richiesta
 Note: Non standard materials combinations on request