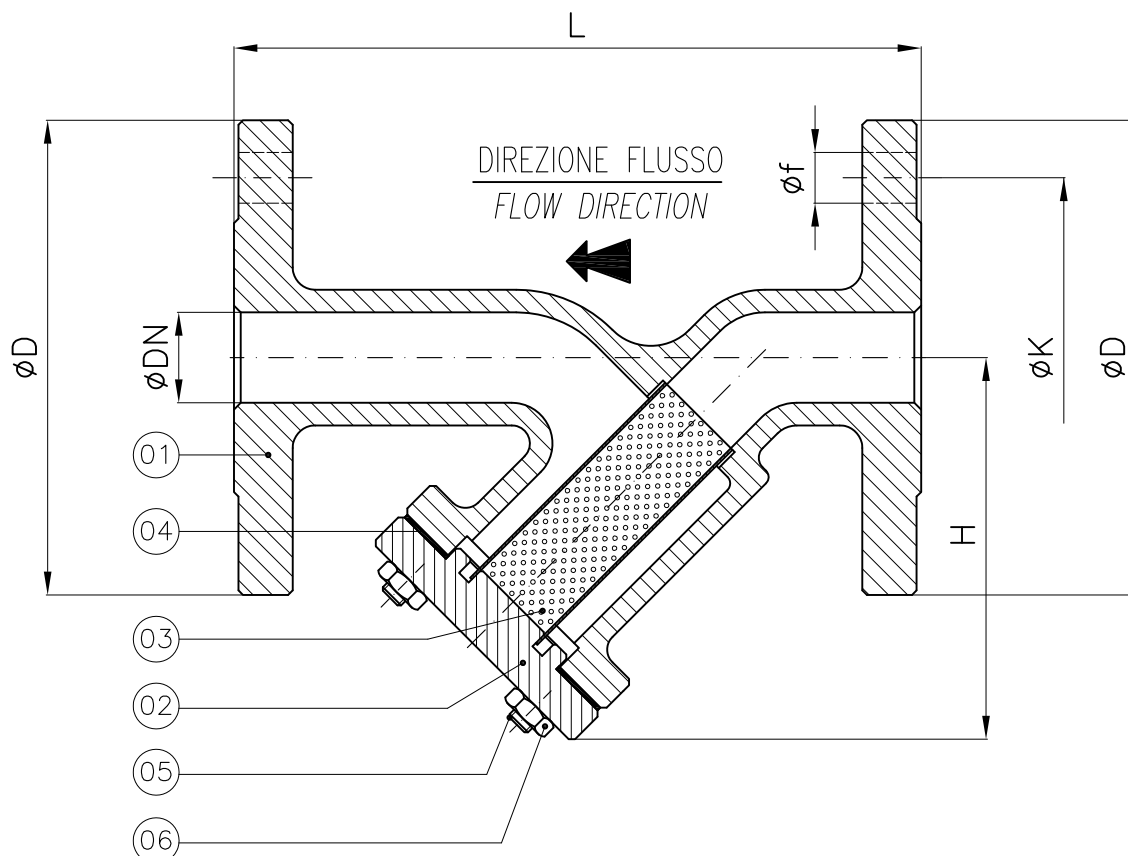




Conform to:
UNI EN1092
ANSI B16.5



- : Per DN250 PN6/16/40/ANSI150 In Acciaio, AISI316, Ghisa, Ghisa sferoidale L=730mm
- : For ND250 NP6/16/40/ANSI150 In Steel, Stainless steel, Cast iron, Nodular cast iron L=730mm
- * : Per DN20-25 PN6/16/40/ANSI150 In bronzo, L=180mm
- * : For ND20-25 NP6/16/40/ANSI150 In bronze, L=180mm

		PN6				PN16				PN40				ANSI150						
DN	DN	H (~)	L PN6-16 PN40-ANSI150	Weight (Kg)	D	K	f	Holes NO. f	D	K	f	Holes NO. f	D	K	f	Holes NO. f	D	K	f	Holes NO. f
15	1/2"	85	130	5	80	55	11	4	95	65	14	4	95	65	14	4	88.9	60	16	4
*20	3/4"	100	150	6	90	65	11	4	105	75	14	4	105	75	14	4	98.4	70	16	4
*25	1"	100	160	6	100	75	11	4	115	85	14	4	115	85	14	4	108	79	16	4
32	1 1/4"	120	180	7	120	90	14	4	140	100	18	4	140	100	18	4	118	89	16	4
40	1 1/2"	140	200	10	130	100	14	4	150	110	18	4	150	110	18	4	127	98	16	4
50	2"	155	230	10	140	110	14	4	165	125	18	4	165	125	18	4	152	121	19	4
65	2 1/2"	195	290	16	160	130	14	4	185	145	18	4	185	145	18	8	178	140	19	4
80	3"	205	310	20	190	150	18	4	200	160	18	8	200	160	18	8	190	152	19	4
100	4"	245	350	30	210	170	18	4	220	180	18	8	235	190	22	8	229	191	19	8
125	5"	295	400	50	240	200	18	8	250	210	18	8	270	220	26	8	254	216	22	8
150	6"	325	480	62	265	225	18	8	285	240	22	8	300	250	26	8	279	241	22	8
200	8"	420	600	122	320	280	18	8	340	295	22	12	375	320	30	12	343	298	22	8
●250	10"	460	620	170	375	335	18	12	405	355	26	12	450	385	33	12	406	362	25	12

Combinazione materiali standard - Standard materials Combination					
ITEM	DENOMINAZIONE DENOMINATION	A/316 MATERIALE MATERIAL	B/316 MATERIALE MATERIAL	G/316 MATERIALE MATERIAL	GS/316 MATERIALE MATERIAL
01	Body	Cast steel GP240-GH UNI EN10213	Bronze UNI EN1982 G-CuSn5Zn5Pb5	Cast iron UNI EN1561 EN-GJL-250	Nodular cast iron EN-GJS-400-15U UNI EN1563
02	Bonnet	Cast steel GP240-GH UNI EN10213	Bronze UNI EN1982 G-CuSn5Zn5Pb5	Cast iron UNI EN1561 EN-GJL-250	Nodular cast iron EN-GJS-400-15U UNI EN1563
03	Strainer basket	Stainless steel AISI316 UNI EN10088	Stainless steel AISI316 UNI EN10088	Stainless steel AISI316 UNI EN10088	Stainless steel AISI316 UNI EN10088
04	Gasket	Planiflex KG carbo/C PF81	EPDM	Planiflex KG carbo/C PF81	Planiflex KG carbo/C PF81
05	Bonnet stud bolt	Galvanized Steel 8.8 EN20898-1	Stainless Steel AISI304 (A2)	Galvanized Steel 8.8 EN20898-1	Galvanized Steel 8.8 EN20898-1
06	Nut	Galvanized Steel 8.8 EN20898-1	Brass CW617N (OT58)	Galvanized Steel 8.8 EN20898-1	Galvanized Steel 8.8 EN20898-1

Nota: Combinazioni materiali non standard a richiesta
 Note: Non standard materials combinations on request